



Speedvale Avenue Bridge, Guelph ON –

Precedent Images for Railing and Formliner Design

JULY 16TH, 2025

Existing Conditions

- Simple vertical bars
- Concrete details
- Narrow sidewalks on either side



Source: [Guelph Today](#)

Option 1:

Art Deco Style

- Precise, bold, detailed, geometric shapes
- Sharp angles
- Strong colours
- Emphasizes luxurious or exotic materials

Railing Sources (ON):

- [Steel Work Solutions](#)
- [IronSkill](#)

Formliner Sources (ON):

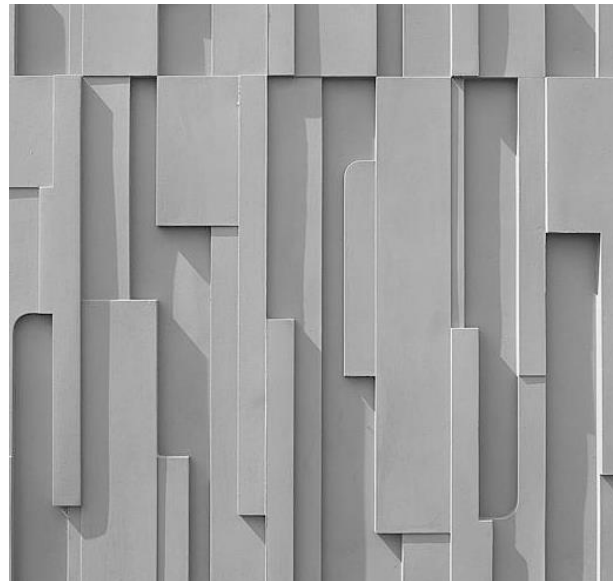
- [Reckli Canada](#)
- [Sika](#)



River Rd., Wasaga Beach. Image courtesy Google Earth



Source: HMM Architectural Metal and Glass



[Reckli Canada: 1/138 Elsass | RECKLI](#)



Eramosa Rd. (top image) and Gordon St. (bottom), Guelph. Images courtesy Google Earth

Option 2:

Modern Style

- Natural materials
- Simple, linear form, no decorative arches, curves or dramatic structural elements
- vertical railings
- “Clean” look
- Design emphasizes functionality through practical form
- Contemporary

Railing Sources (ON):

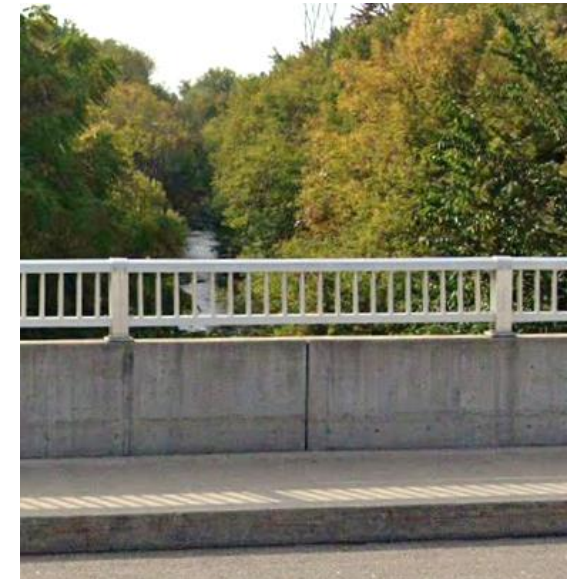
- [Steel Work Solutions](#)
- [IronSkill](#)
- [GTA Railings](#)
- [Alumiguard MFG](#)

Formliner Sources (ON):

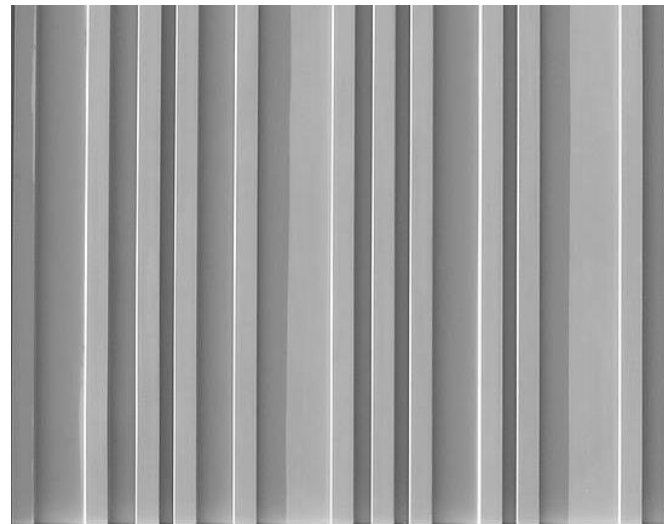
- [Reckli Canada](#)
- [Sika](#)



Randall St., Oakville. Image Courtesy Google Earth



John St., Oshawa. Image Courtesy Google Earth



Reckli Canada: 1/245 Nevada | RECKLI



Sagonaska Bridge, Belleville. Image provided by Google Earth.

Option 3: Rustic Style

- Natural materials
- Organic forms found throughout design, from soft curves to grain patterns
- Warm, earthy appearance
- Textured patterns to suggest a hand-crafted or artisanal design
- Visually dynamic, surface irregularities

Railing Sources (ON):

- [Steel Work Solutions](#)
- [IronSkill](#)
- [EuroEAC](#)

Formliner Sources (ON):

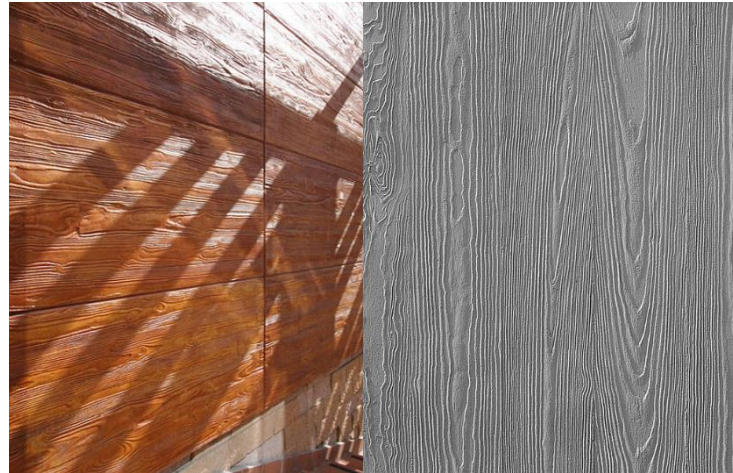
- [Reckli Canada](#)
- [Sika](#)



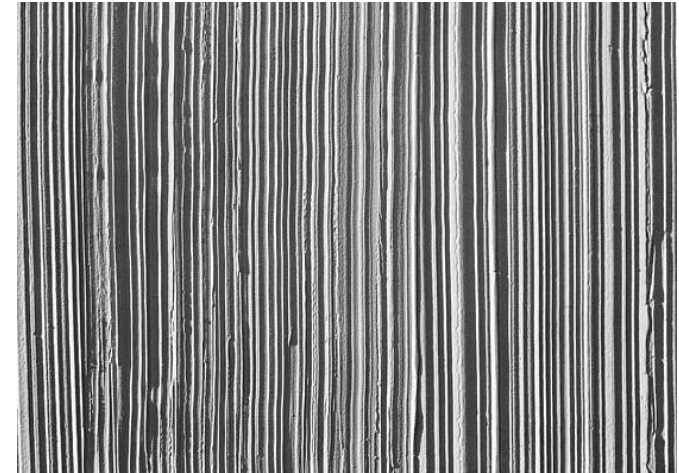
Fountain St., Cambridge. Image courtesy Google Earth



Fairway Rd. N., Kitchener. Image courtesy Google Earth



Source: Reckli Canada: 2/35 Alster N | RECKLI



Source: Reckli Canada 2/37 Lenne | RECKLI