

Downtown Waste Working Group

Meeting #2

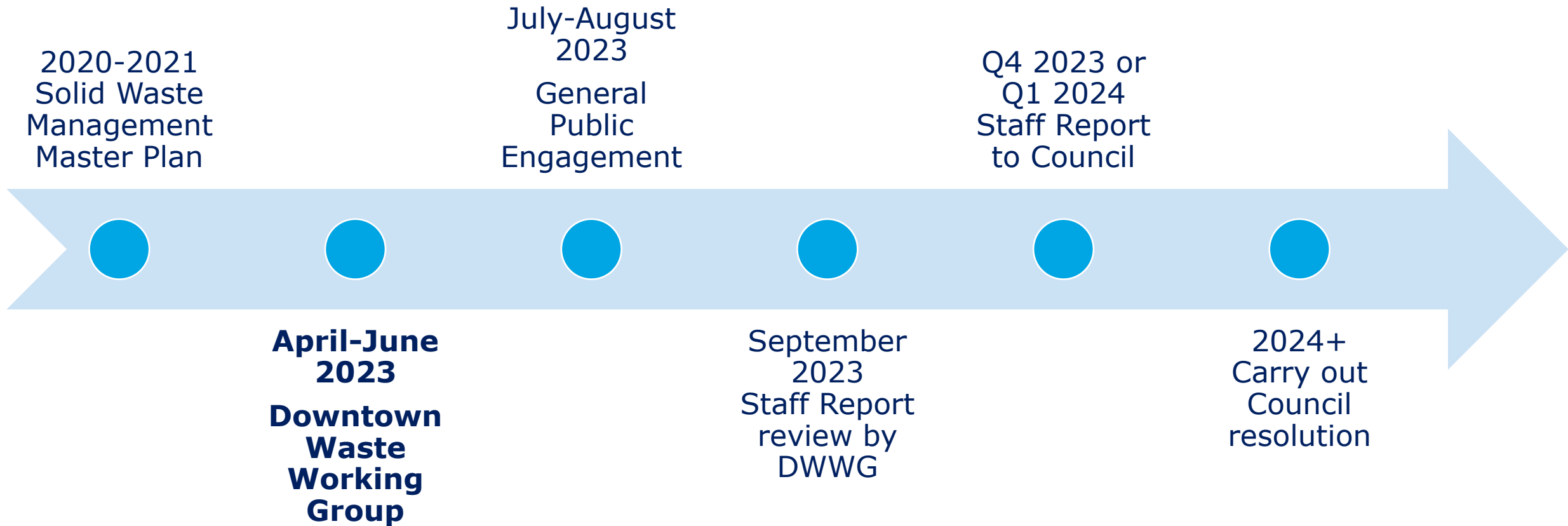
June 7, 2023

Agenda

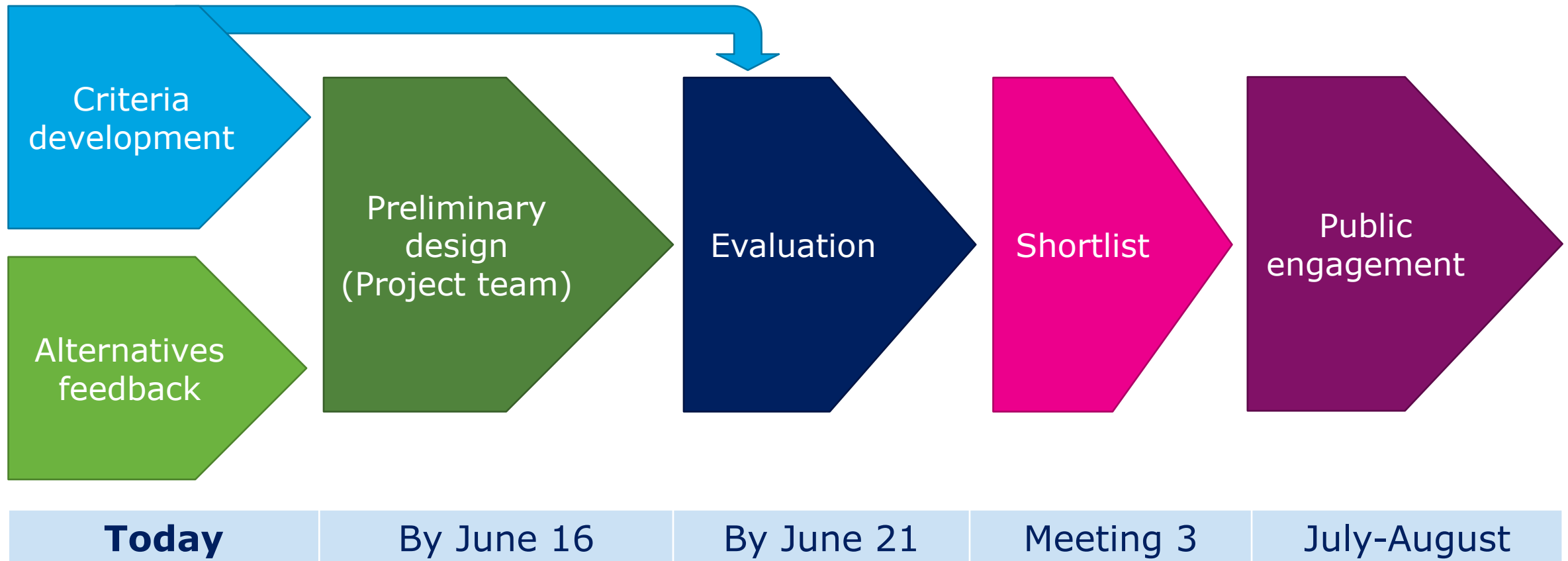
- 11:00 a.m. Welcome
- 11:05 p.m. Housekeeping
- 11:10 p.m. Group introductions
- 11:15 p.m. Report back on questions
- 11:20 p.m. Evaluation criteria presentation
- 11:30 p.m. Criteria weighting exercise
- 11:45 p.m. Alternatives feedback
- 12:35 p.m. Summary activity
- 12:55 p.m. Close

Welcome

Project Timeline



Meeting 2-3



Housekeeping

Introductions

Name and pronouns, organization if applicable

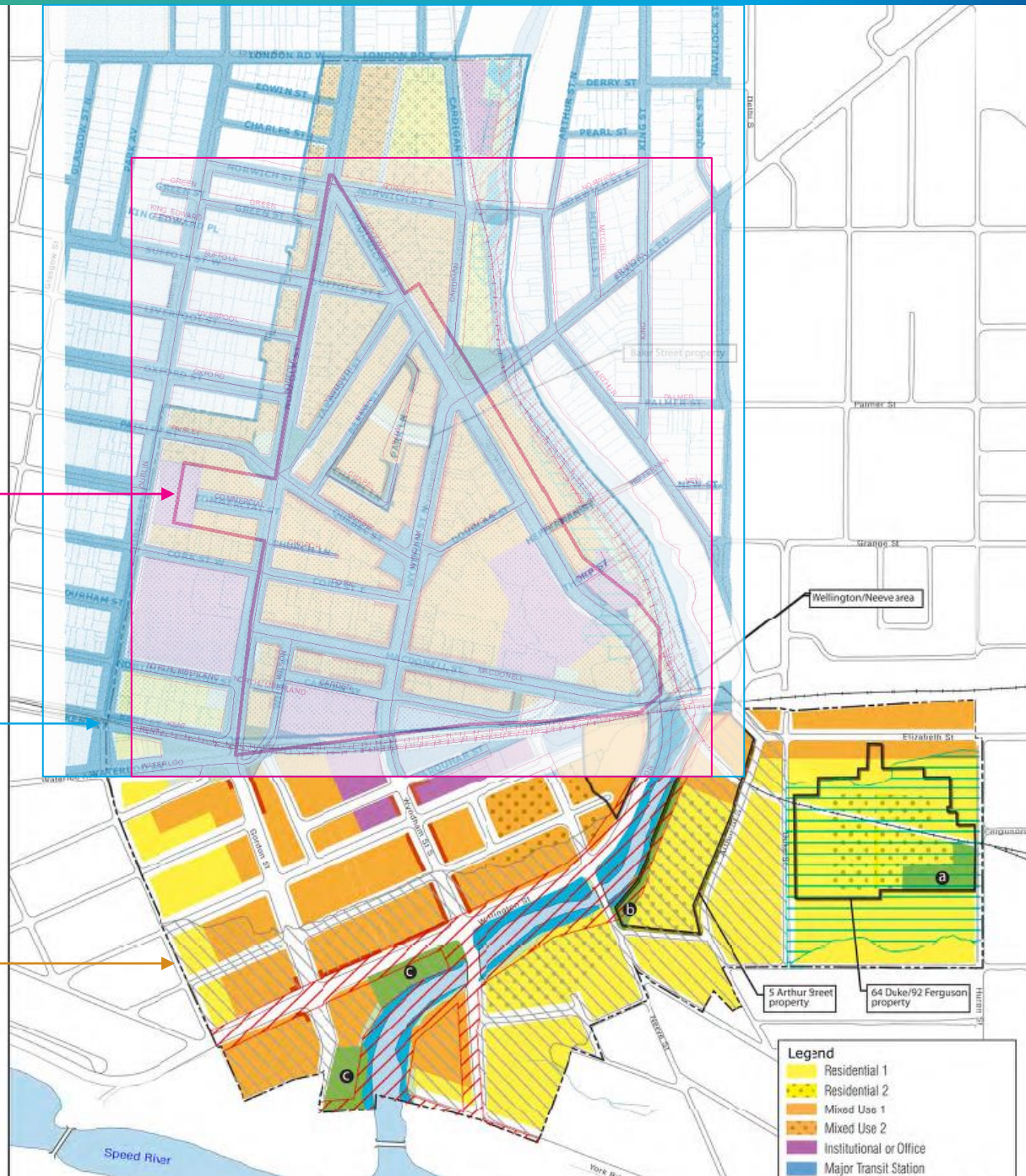
Report back on questions

Boundaries

Downtown Collection Area (Waste Management By-law)

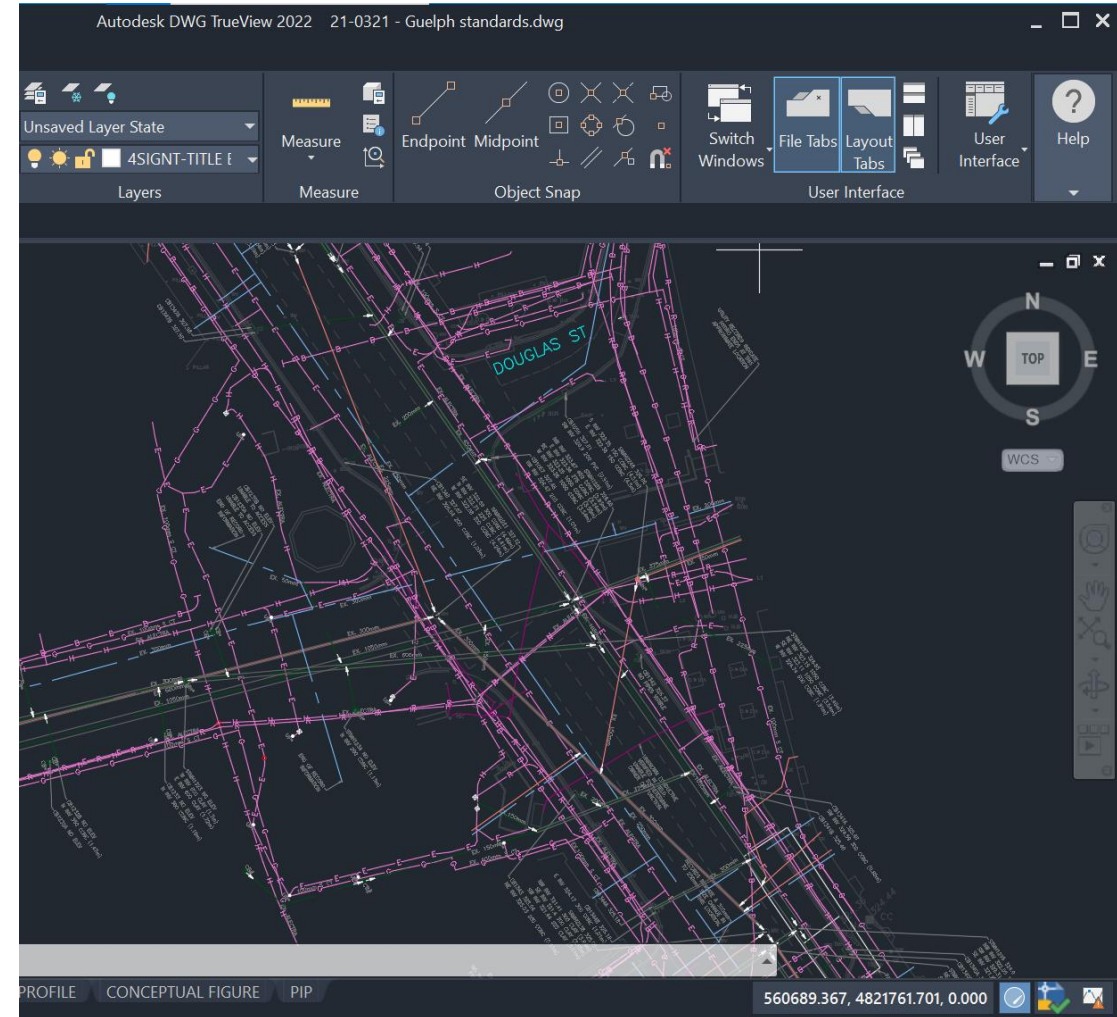
DGBA (Downtown Business Improvement Area By-law)

Downtown secondary plan (Official Plan)



Subsurface utilities

- Browsable map to be shared on this screen
- Infrastructure renewal presents opportunity to relocate utilities
- Cork Street is constrained by high density of telecommunications utilities



Winter operation and maintenance

Cart enclosures	Aboveground communal bins	Underground communal bins	Door-to-door
<ul style="list-style-type: none"> • Path to enclosure needs to be kept clear to roll carts, swing doors open • Curb needs to be clear to set out carts for collection, as it is now 	<ul style="list-style-type: none"> • Access path for truck needs to be clear enough • Already widely used during Guelph winters 	<ul style="list-style-type: none"> • Access path for truck needs to be clear enough • Clear snow and ice to avoid falling while lifting • Used in northern climates such as Quebec City and Norway 	<ul style="list-style-type: none"> • Clear path from door to truck required, regardless of handoff point at door or at truck • Snowbanks present obstacle to moving between street and sidewalk

Meeting #2 homework

- Think about what matters to **you** and **your neighbours**.
- Which of the solutions examined in the Master Plan do you think they will **like** and why?
- Can we immediately **drop any solutions**? What pitfalls are you envisioning?
- Thinking about garbage, organics, cardboard, and other recycling as **our 4 streams** to manage, do you see any variation to your answers above?
- Thinking about **your block versus other blocks**, do your answers vary based on the space, character, or other aspects of those locations?

Evaluation criteria

Mandatory criteria

Alternatives must meet these

- **Compatible** with streetscape and subsurface utility constraints
 - Fits into planned upgrades for the Downtown, both physically and sequentially
- **Permanent**/semi-permanent locations
- **Adequate capacity** to prevent overflow

Rated criteria

Alternatives may be ranked based on these

- **Accountable:** Users are identifiable; Opportunities exist to incentivize reduction and diversion and improve performance
- **Aesthetically pleasing:** Appearance enhances or blends with scenery; low odour; easy to clean
- **Convenient:** Short journey to access system; available at adequate frequency
- **Economical:** Can be collected and maintained at a competitive cost for the value offered
- **Flexible:** Able to move or grow to respond to emerging needs
- **Inobtrusive:** Does not visually or physically block movement or sightlines at the street level; minimizes spaces taken from parking, patios, or other amenities
- **Serviceable:** Mature and competitive market for operation and maintenance support
- **User-friendly:** Simple to use and without accessibility barriers; attractive to use without relying on enforcement

Rated criteria [**Refined by group**]

Alternatives may be ranked based on these

- **Accountability and compliance:** Users are identifiable; Opportunities exist to incentivize reduction and diversion and improve performance; **able to be enforced**
- **Aesthetically pleasing:** Appearance enhances or blends with scenery; low odour; easy to clean
- **Convenient:** Short journey to access system; available at adequate frequency
- **Economical:** Can be collected and maintained at a competitive cost for the value offered; **ability to collect efficiently through uniformity of collection systems**
- **Adaptability to changing, size, streams, and number:** Able to grow to respond to emerging needs (tonnages generated, location of generation, streams collected); **planning ahead when sizing**
- **Inobtrusive:** Does not visually or physically block movement or sightlines at the street level; minimizes spaces taken from parking, patios, or other amenities; **does not conflict with other uses (bus, fire, loading zones)**
- **Serviceable:** Mature and competitive market for operation and maintenance support; **ability to collect**
- **User-friendly:** Simple to use and without accessibility barriers; attractive to use without relying on enforcement; **able to service diverse needs (businesses vs residents, generation rates)**
- **Environmental performance:** maximizes diversion of material and contribution to circular economy

Dotmocracy

- Each person has four votes
- Cast them on the criteria that are most important to you/ your organization
- You may use more than one vote on the same criterion

Feedback on alternatives

Activity

- **Write down as much feedback as you can think of**
- 4 stations; one for each alternative
- Spend ~10 minutes at each. We will remind you of time
- Use the map, streetscapes, and chart of waste streams to give place and stream-specific feedback
- Be creative to say what you need to say. We will read everything!

Guiding questions

- What do you like about this alternative?
- Where and how do you think it would be best applied?
- What do you not like?
- Where and how should we avoid using it?
- What questions or concerns do you have about how this alternative might work?
- (Use the pink and blue notes to show positives and negatives visually)



Star your favourite option



Put an animal by your least favourite

Communal above-ground bins

- Semi-permanent location, but still movable
- Requires space for bin and for truck approach including overhead space but not underground
- Usually serviced by front-end loading truck (very common truck)
- Can be beautified with enclosures
- Access can be controlled with lockable lids and/or enclosures



Communal underground bins

- Smaller, sidewalk-appropriate and larger, parking lot-appropriate sizes available
- Permanent location
- Underground infrastructure of bins need to be planned for
- May be serviced by a crane or front-end loading truck; front-end bins and trucks need more space for collection, crane is more flexible
- Access can be controlled with physical locks or access card/fob



Individual enclosures

- Encourage cart uptake by requiring properties to use carts but providing the option to store them in public space, subject to design and placement specifications
- Property owner would set out cart for collection and return to enclosure
- Semi-permanent but movable with approval
- Locks could be required or at property owner discretion



Direct collection

- Users meet collection truck at doorstep/curb or move own waste to depot
- Could be scheduled or on demand
- No temporary storage in public space



Summary

1. As you went through the mapping activity what stood out to you?
2. How do you feel about what you see coming forward? Are you excited? Do you have concerns?
3. What insights are beginning to emerge? What options are open to us?
4. The Project Team is planning to use this feedback to create preliminary designs, as the group to evaluate them, then take the leading choices to the public for discussion. What else needs to happen next?

Closing

- Look out for an email introducing the preliminary designs and inviting you to rank them according to our criteria
- Meeting 3 we will discuss the results and finalize what we want to bring to the community for broader feedback

Thank you very much for your participation!